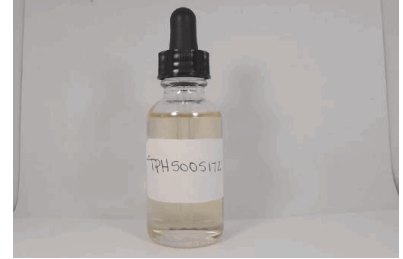


Kaycha Labs Oregon  
 540 East Vilas Road, Suite F, Central Point, OR 97502  
 541-668-7444 / OLCC 010-10166277B9D / www.kaychalabs.com

**TPH50051721**  
**CDJ Hope Enterprises**  
*Info Only*



**Confident Cannabis ID:** 2105KR0058.1734

**Sample ID:** M210554-03

**Matrix:** Cannabinoid Product (liquid)

**METRC Batch #:**

**Sampling Method/SOP:** Client

**Date Sampled:** NA

**Date Accepted:** 05/18/21

**Harvest/Process Lot ID:**

**Batch ID:**

**Batch Size (g):**

**Unit for Sale:** 1oz

**Harvest/Production Date:**

## Cannabinoid Analysis

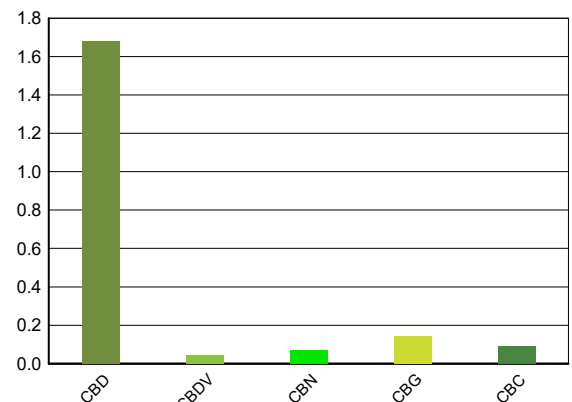
**FOR INFORMATIONAL USE ONLY - NOT FOR REGULATORY PURPOSES**

Date/Time Extracted: 05/19/21 10:05

Analysis Method/SOP: SOP.T.40.020

Date/Time Analyzed: 05/19/21 22:25

Sample density: 28.35 g/unit

Cannabinoids	LOQ(%)	mg/g	mg/unit	Cannabinoid Profile
<b>Total THC</b> ((THCA*0.877)+Δ9THC)		<b>&lt;LOQ</b>	<b>&lt;LOQ</b>	
<b>Total CBD</b> ((CBDA*0.877)+CBD)		<b>16.80</b>	<b>476</b>	
THCA	0.040	< LOQ	< LOQ	
delta 9-THC	0.040	< LOQ	< LOQ	
delta 8-THC	0.040	< LOQ	< LOQ	
THCV	0.040	< LOQ	< LOQ	
CBGA	0.040	< LOQ	< LOQ	
CBDA	0.040	< LOQ	< LOQ	
CBD	0.040	16.80	476	
CBDV	0.040	0.45	12.8	
CBN	0.040	0.68	19.3	
CBG	0.040	1.44	40.8	
CBC	0.040	0.92	26.1	
THCV-A	0.040	< LOQ	< LOQ	
CBDV-A	0.040	< LOQ	< LOQ	
CBCA	0.040	< LOQ	< LOQ	
Sum of tested Cannabinoids	0.040	20.30	576	

"Total THC" and "Total CBD" are calculated values and are an Oregon reporting requirement (OAR 333-064-0100). For Cannabinoid analysis, only delta 9-THC, THCA, CBD, CBDA are ORELAP accredited analytes. Cannabinoid values reported for plant matter are dry weight corrected; Oregon Water Activity action level is 0.65Aw and Oregon Moisture Content action level is 15%, Samples above limit will be highlighted RED; FD = Field Duplicate; LOQ = Limit of Quantitation.



Anthony Smith, Ph.D  
 Laboratory Director - 5/28/2021

**Kaycha Labs Oregon**  
**540 East Vilas Road, Suite F, Central Point, OR 97502**  
**541-668-7444 / OLCC 010-10166277B9D / www.kaychalabs.com**

## Quality Control

**Batch: M21E059 - SOP.T.30.050 Prep for Cannabinoids**

<b>Blank(M21E059-BLK1)</b>			<b>Extracted: 05/19/21 10:05</b>		<b>Analyzed: 05/19/21 21:36</b>		
<b>Analyte</b>	<b>Result</b>	<b>LOQ</b>	<b>Recovery Limits</b>	<b>Analyte</b>	<b>Result</b>	<b>LOQ</b>	<b>Recovery Limits</b>
THCA	< LOQ	0.040 (%)	< LOQ	delta 9-THC	< LOQ	0.040 (%)	< LOQ
delta 8-THC	< LOQ	0.040 (%)	< LOQ	THCV-A	< LOQ	0.040 (%)	< LOQ
THCV	< LOQ	0.040 (%)	< LOQ	CBDA	< LOQ	0.040 (%)	< LOQ
CBD	< LOQ	0.040 (%)	< LOQ	CBDV-A	< LOQ	0.040 (%)	< LOQ
CBDV	< LOQ	0.040 (%)	< LOQ	CBG	< LOQ	0.040 (%)	< LOQ
CBGA	< LOQ	0.040 (%)	< LOQ	CBN	< LOQ	0.040 (%)	< LOQ
CBCA	< LOQ	0.040 (%)	< LOQ	CBC	< LOQ	0.040 (%)	< LOQ
Sum of tested Cannabinoid:	< LOQ	0.040 (%)	< LOQ				

<b>LCS(M21E059-BS1)</b>			<b>Extracted: 05/19/21 10:05</b>		<b>Analyzed: 05/19/21 21:53</b>		
<b>Analyte</b>	<b>% Recovery</b>	<b>LOQ</b>	<b>Recovery Limits</b>	<b>Analyte</b>	<b>% Recovery</b>	<b>LOQ</b>	<b>Recovery Limits</b>
THCA	91.2	(%)	70-130	delta 9-THC	94.1	(%)	70-130
THCV	98.0	(%)	70-130	CBDA	94.8	(%)	70-130
CBD	94.6	(%)	70-130	CBG	94.6	(%)	70-130
CBGA	94.1	(%)	70-130	CBN	112	(%)	70-130
CBCA	104	(%)	70-130	CBC	93.1	(%)	70-130



Anthony Smith, Ph.D  
 Laboratory Director - 5/28/2021