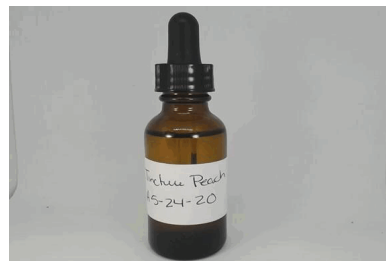


EVIO Labs Medford (pka Kenevir Research)  
 540 East Vilas Road, Suite F, Central Point, OR 97502  
 541-668-7444 / OLCC 010-1001626980D / www.EVIOLabs.com

## Tincture Peach A-5-24-20

LOJCO LLC

Info Only



Confident Cannabis ID: 2005KR0183.2870

Sample ID: M200871-02

Matrix: Tincture

METRC Batch #:

Sampling Method/SOP: Client

Date Sampled: NA

Date Accepted: 05/29/20

Harvest/Process Lot ID:

Batch ID:

Batch Size (g):

Unit for Sale: 30mL (28.5g)

Harvest/Production Date:

### Cannabinoid Analysis

FOR INFORMATIONAL USE ONLY - NOT FOR REGULATORY PURPOSES

Date/Time Extracted: 06/01/20 09:50

Analysis Method/SOP: SOP.T.40.020

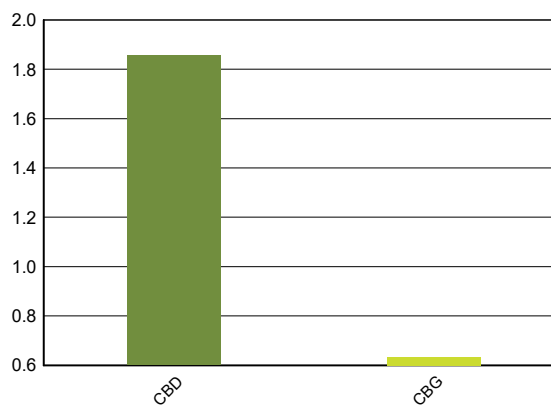
Date/Time Analyzed: 06/02/20 00:51

Sample mass: 28.5g/mg/unit

Cannabinoids	LOQ(%)	mg/g	mg/unit	Cannabinoid Profile
--------------	--------	------	---------	---------------------

<b>Total THC</b> ((THCA*0.877)+Δ9THC)		<b>&lt;LOQ</b>	<b>&lt;LOQ</b>	
<b>Total CBD</b> ((CBDA*0.877)+CBD)		<b>18.60</b>	<b>530</b>	

THCA	0.040	< LOQ	< LOQ
delta 9-THC	0.040	< LOQ	< LOQ
delta 8-THC	0.040	< LOQ	< LOQ
THCV	0.040	< LOQ	< LOQ
CBGA	0.040	< LOQ	< LOQ
CBDA	0.040	< LOQ	< LOQ
CBD	0.040	18.60	530
CBDV	0.040	< LOQ	< LOQ
CBN	0.040	< LOQ	< LOQ
CBG	0.040	6.34	181
CBC	0.040	< LOQ	< LOQ
THCV-A	0.040	< LOQ	< LOQ
CBDV-A	0.040	< LOQ	< LOQ
CBCA	0.040	< LOQ	< LOQ
Sum of tested Cannabinoids	0.040	24.90	710



"Total THC" and "Total CBD" are calculated values and are an Oregon reporting requirement (OAR 333-064-0100). For Cannabinoid analysis, only delta 9-THC, THCA, CBD, CBDA are ORELAP accredited analytes. Cannabinoid values reported for plant matter are dry weight corrected; Oregon Water Activity action level is 0.65Aw and Oregon Moisture Content action level is 15%, Samples above limit will be highlighted RED; FD = Field Duplicate; LOQ = Limit of Quantitation.

Stephanie Moon  
 Laboratory Director - 6/4/2020

EVIO Labs Medford (pka Kenevir Research)  
 540 East Vilas Road, Suite F, Central Point, OR 97502  
 541-668-7444 / OLCC 010-1001626980D / www.EVIOLabs.com

## Quality Control

**Batch: M20F001 - SOP.T.30.050 Prep for Cannabinoids**

Blank(M20F001-BLK1)			Extracted: 06/01/20 09:50		Analyzed: 06/02/20 00:02		
Analyte	Result	LOQ	Recovery Limits	Analyte	Result	LOQ	Recovery Limits
THCA	< LOQ	0.040 (%)	< LOQ	delta 9-THC	< LOQ	0.040 (%)	< LOQ
delta 8-THC	< LOQ	0.040 (%)	< LOQ	THCV-A	< LOQ	0.040 (%)	< LOQ
THCV	< LOQ	0.040 (%)	< LOQ	CBDA	< LOQ	0.040 (%)	< LOQ
CBD	< LOQ	0.040 (%)	< LOQ	CBDV-A	< LOQ	0.040 (%)	< LOQ
CBDV	< LOQ	0.040 (%)	< LOQ	CBG	< LOQ	0.040 (%)	< LOQ
CBGA	< LOQ	0.040 (%)	< LOQ	CBN	< LOQ	0.040 (%)	< LOQ
CBC	< LOQ	0.040 (%)	< LOQ	Sum of tested Cannabinoid:	< LOQ	0.040 (%)	< LOQ

LCS(M20F001-BS1)			Extracted: 06/01/20 09:50		Analyzed: 06/02/20 00:19		
Analyte	% Recovery	LOQ	Recovery Limits	Analyte	% Recovery	LOQ	Recovery Limits
THCA	96.5	(%)	70-130	delta 9-THC	95.7	(%)	70-130
CBDA	93.0	(%)	70-130	CBD	98.5	(%)	70-130



Stephanie Moon  
 Laboratory Director - 6/4/2020

**EVIO Labs Medford (pka Kenevir Research)**  
**540 East Vilas Road, Suite F, Central Point, OR 97502**  
**541-668-7444 / OLCC 010-1001626980D / www.EVIOLabs.com**

*FOR INFORMATIONAL USE ONLY - NOT FOR REGULATORY PURPOSES*

## Distillate 6-9-20

**LOJCO LLC**

**Info Only**

**Sample ID: M200930-05**

**METRC Batch #:**

**Matrix: Distillate**

**Date Sampled: NA**

**Date Accepted: 06/09/20**

**Batch ID:**

**Batch Size:**

**Sampling Method/SOP: Client**

### Pesticides

*Date/Time Extracted: 06/12/20 09:11*

*Date/Time Analyzed: 6/12/2020 8:36:51PM*

*Analysis Method/SOP: SOP.T.40.050 / SOP.T.40.051*

Analyte	LOQ	Action Level	Result	Units	Type
Abamectin	0.250	0.5	< LOQ	ppm	
Acephate	0.200	0.4	< LOQ	ppm	Organophosphate insecticide
Acequinocyl	1.00	2	< LOQ	ppm	
Acetamiprid	0.100	0.2	< LOQ	ppm	Neonicotinoid insecticide
Aldicarb	0.200	0.4	< LOQ	ppm	Carbamate insecticide
Azoxystrobin	0.100	0.2	< LOQ	ppm	
Bifenazate	0.100	0.2	< LOQ	ppm	Unclassified insecticide
Bifenthrin	0.100	0.2	< LOQ	ppm	
Boscalid	0.200	0.4	< LOQ	ppm	Anilide fungicide
Carbaryl	0.100	0.2	< LOQ	ppm	Carbamate insecticide
Carbofuran	0.100	0.2	< LOQ	ppm	Carbamate insecticide
Chlorantraniliprole	0.100	0.2	< LOQ	ppm	Anthranilic diamide insecticide
Chlorfenapyr	0.500	1	< LOQ	ppm	Pyrazole insecticide
Chlorpyrifos	0.100	0.2	< LOQ	ppm	Organophosphate insecticide
Clofentezine	0.100	0.2	< LOQ	ppm	
Cyfluthrin	0.500	1	< LOQ	ppm	
Cypermethrin	0.500	1	< LOQ	ppm	
Daminozide	0.500	1	< LOQ	ppm	
DDVP (Dichlorvos)	0.500	1	< LOQ	ppm	
Diazinon	0.100	0.2	< LOQ	ppm	Organophosphate insecticide
Dimethoate	0.100	0.2	< LOQ	ppm	
Ethoprophos	0.100	0.2	< LOQ	ppm	
Etofenprox	0.200	0.4	< LOQ	ppm	
Etoxazole	0.100	0.2	< LOQ	ppm	Unclassified miticide
Fenoxycarb	0.100	0.2	< LOQ	ppm	
Fenproximate	0.200	0.4	< LOQ	ppm	
Fipronil	0.200	0.4	< LOQ	ppm	Pyrazole insecticide
Fonicamid	0.500	1	< LOQ	ppm	Pyridinecarboxamide insecticide
Fludioxonil	0.200	0.4	< LOQ	ppm	non-systemic fungicide
Hexythiazox	0.500	1	< LOQ	ppm	
Imazalil	0.100	0.2	< LOQ	ppm	Azole fungicide
Imidacloprid	0.200	0.4	< LOQ	ppm	Neonicotinoid insecticide
Kresoxim-methyl	0.200	0.4	< LOQ	ppm	
Malathion	0.100	0.2	< LOQ	ppm	
Metalaxyl	0.100	0.2	< LOQ	ppm	
Methiocarb	0.100	0.2	< LOQ	ppm	Carbamate insecticide



Stephanie Moon  
Laboratory Director - 6/16/2020

**EVIO Labs Medford (pka Kenevir Research)**  
**540 East Vilas Road, Suite F, Central Point, OR 97502**  
**541-668-7444 / OLCC 010-1001626980D / www.EVIOLabs.com**

*FOR INFORMATIONAL USE ONLY - NOT FOR REGULATORY PURPOSES*

## Distillate 6-9-20

**LOJCO LLC**

**Info Only**

**Sample ID: M200930-05**

**METRC Batch #:**

**Matrix: Distillate**

**Date Sampled: NA**

**Date Accepted: 06/09/20**

**Batch ID:**

**Batch Size:**

**Sampling Method/SOP: Client**

### Pesticides

*Date/Time Extracted: 06/12/20 09:11*

*Date/Time Analyzed: 6/12/2020 8:36:51PM*

*Analysis Method/SOP: SOP.T.40.050 / SOP.T.40.051*

Analyte	LOQ	Action Level	Result	Units	Type
Methomyl	0.200	0.4	< LOQ	ppm	Carbamate insecticide
Methyl parathion	0.100	0.2	< LOQ	ppm	
MGK-264	0.100	0.2	< LOQ	ppm	
Myclobutanil	0.100	0.2	< LOQ	ppm	Azole fungicide
Naled	0.250	0.5	< LOQ	ppm	
Oxamyl	0.500	1	< LOQ	ppm	Carbamate insecticide
Paclobutrazol	0.200	0.4	< LOQ	ppm	Azole plant growth regulator
Permethrins	0.100	0.2	< LOQ	ppm	
Phosmet	0.100	0.2	< LOQ	ppm	Organophosphate insecticide
Piperonyl butoxide	1.00	2	< LOQ	ppm	
Prallethrin	0.100	0.2	< LOQ	ppm	
Propiconazole	0.200	0.4	< LOQ	ppm	
Propoxur	0.100	0.2	< LOQ	ppm	Carbamate insecticide
Pyrethrins	0.500	1	< LOQ	ppm	
Pyridaben	0.100	0.2	< LOQ	ppm	Unclassified insecticide
Spinosad	0.100	0.2	< LOQ	ppm	Spinosyn insecticide
Spiromesifen	0.100	0.2	< LOQ	ppm	Keto-enol insecticide
Spirotetramat	0.100	0.2	< LOQ	ppm	Keto-enol insecticide
Spiroxamine	0.200	0.4	< LOQ	ppm	Unclassified fungicide
Tebuconazole	0.200	0.4	< LOQ	ppm	
Thiacloprid	0.100	0.2	< LOQ	ppm	
Thiamethoxam	0.100	0.2	< LOQ	ppm	Neonicotinoid insectide
Trifloxystrobin	0.100	0.2	< LOQ	ppm	Strobin fungicide

**Results above the action level fail Oregon state testing requirements and will be highlighted RED.**

LOQ= Limit of Quantitation; PPM= Parts per million; ND= Not detected; NT= Not tested; AC= Above calibration range. PASS/FAIL status based on OAR 333-007.



Stephanie Moon  
Laboratory Director - 6/16/2020

**EVIO Labs Medford (pka Kenevir Research)**  
**540 East Vilas Road, Suite F, Central Point, OR 97502**  
**541-668-7444 / OLCC 010-1001626980D / www.EVIOLabs.com**

## Quality Control

**Batch: M20F057 - SOP.T.30.060 Pesticide Prep**

Blank(M20F057-BLK1)			Extracted: 06/12/20 09:11		Analyzed: 06/15/20 10:57		
Analyte	Result	LOQ	Recovery Limits	Analyte	Result	LOQ	Recovery Limits
Methyl parathion	< LOQ	0.100 (ppm)	< LOQ	MGK-264	< LOQ	0.100 (ppm)	< LOQ
Chlorfenapyr	< LOQ	0.500 (ppm)	< LOQ	Cyfluthrin	< LOQ	0.500 (ppm)	< LOQ
Cypermethrin	< LOQ	0.500 (ppm)	< LOQ	Abamectin	< LOQ	0.250 (ppm)	< LOQ
Acephate	< LOQ	0.200 (ppm)	< LOQ	Acequinocyl	< LOQ	1.00 (ppm)	< LOQ
Acetamiprid	< LOQ	0.100 (ppm)	< LOQ	Aldicarb	< LOQ	0.200 (ppm)	< LOQ
Azoxystrobin	< LOQ	0.100 (ppm)	< LOQ	Bifenazate	< LOQ	0.100 (ppm)	< LOQ
Bifenthrin	< LOQ	0.100 (ppm)	< LOQ	Boscalid	< LOQ	0.200 (ppm)	< LOQ
Carbaryl	< LOQ	0.100 (ppm)	< LOQ	Carbofuran	< LOQ	0.100 (ppm)	< LOQ
Chlorantraniliprole	< LOQ	0.100 (ppm)	< LOQ	Chlorpyrifos	< LOQ	0.100 (ppm)	< LOQ
Clofentezine	< LOQ	0.100 (ppm)	< LOQ	Daminozide	< LOQ	0.500 (ppm)	< LOQ
DDVP (Dichlorvos)	< LOQ	0.500 (ppm)	< LOQ	Diazinon	< LOQ	0.100 (ppm)	< LOQ
Dimethoate	< LOQ	0.100 (ppm)	< LOQ	Ethoprophos	< LOQ	0.100 (ppm)	< LOQ
Etofenprox	< LOQ	0.200 (ppm)	< LOQ	Etoxazole	< LOQ	0.100 (ppm)	< LOQ
Fenoxycarb	< LOQ	0.100 (ppm)	< LOQ	Fenpyroximate	< LOQ	0.200 (ppm)	< LOQ
Fipronil	< LOQ	0.200 (ppm)	< LOQ	Flonicamid	< LOQ	0.500 (ppm)	< LOQ
Fludioxonil	< LOQ	0.200 (ppm)	< LOQ	Hexythiazox	< LOQ	0.500 (ppm)	< LOQ
Imazalil	< LOQ	0.100 (ppm)	< LOQ	Imidacloprid	< LOQ	0.200 (ppm)	< LOQ
Kresoxim-methyl	< LOQ	0.200 (ppm)	< LOQ	Malathion	< LOQ	0.100 (ppm)	< LOQ
Metalaxyl	< LOQ	0.100 (ppm)	< LOQ	Methiocarb	< LOQ	0.100 (ppm)	< LOQ
Methomyl	< LOQ	0.200 (ppm)	< LOQ	Myclobutanil	< LOQ	0.100 (ppm)	< LOQ
Naled	< LOQ	0.250 (ppm)	< LOQ	Oxamyl	< LOQ	0.500 (ppm)	< LOQ
Paclobutrazol	< LOQ	0.200 (ppm)	< LOQ	Permethrins	< LOQ	0.100 (ppm)	< LOQ
Phosmet	< LOQ	0.100 (ppm)	< LOQ	Piperonyl butoxide	< LOQ	1.00 (ppm)	< LOQ
Prallethrin	< LOQ	0.100 (ppm)	< LOQ	Propiconazole	< LOQ	0.200 (ppm)	< LOQ
Propoxur	< LOQ	0.100 (ppm)	< LOQ	Pyridaben	< LOQ	0.100 (ppm)	< LOQ
Pyrethrins	< LOQ	0.500 (ppm)	< LOQ	Spinosad	< LOQ	0.100 (ppm)	< LOQ
Spiromesifen	< LOQ	0.100 (ppm)	< LOQ	Spirotetramat	< LOQ	0.100 (ppm)	< LOQ
Spiroxamine	< LOQ	0.200 (ppm)	< LOQ	Tebuconazole	< LOQ	0.200 (ppm)	< LOQ
Thiacloprid	< LOQ	0.100 (ppm)	< LOQ	Thiamethoxam	< LOQ	0.100 (ppm)	< LOQ
Trifloxystrobin	< LOQ	0.100 (ppm)	< LOQ				

LCS(M20F057-BS1)			Extracted: 06/12/20 09:11		Analyzed: 06/15/20 11:25		
Analyte	% Recovery	LOQ	Recovery Limits	Analyte	% Recovery	LOQ	Recovery Limits
Methyl parathion	118	0.100 (ppm)	50-150	MGK-264	131	0.100 (ppm)	50-150
Chlorfenapyr	129	0.500 (ppm)	50-150	Cyfluthrin	91.2	0.500 (ppm)	50-150
Cypermethrin	88.3	0.500 (ppm)	50-150	Abamectin	104	0.250 (ppm)	50-150
Acephate	90.7	0.200 (ppm)	50-150	Acequinocyl	135	1.00 (ppm)	50-150



**Stephanie Moon**  
**Laboratory Director - 6/16/2020**

**EVIO Labs Medford (pka Kenevir Research)**  
**540 East Vilas Road, Suite F, Central Point, OR 97502**  
**541-668-7444 / OLCC 010-1001626980D / www.EVIOLabs.com**

## Quality Control

**Batch: M20F057 - SOP.T.30.060 Pesticide Prep (Continued)**

LCS(M20F057-BS1)			Extracted: 06/12/20 09:11		Analyzed: 06/12/20 18:01		
Analyte	% Recovery	LOQ	Recovery Limits	Analyte	% Recovery	LOQ	Recovery Limits
Acetamiprid	109	0.100 (ppm)	50-150	Aldicarb	106	0.200 (ppm)	50-150
Azoxystrobin	98.0	0.100 (ppm)	50-150	Bifenazate	86.5	0.100 (ppm)	50-150
Bifenthrin	111	0.100 (ppm)	50-150	Boscalid	87.4	0.200 (ppm)	50-150
Carbaryl	92.6	0.100 (ppm)	50-150	Carbofuran	111	0.100 (ppm)	50-150
Chlorantraniliprole	103	0.100 (ppm)	50-150	Chlorpyrifos	95.7	0.100 (ppm)	50-150
Clofentezine	151	0.100 (ppm)	50-150	Daminozide	128	0.500 (ppm)	50-150
DDVP (Dichlorvos)	78.8	0.500 (ppm)	50-150	Diazinon	105	0.100 (ppm)	50-150
Dimethoate	98.8	0.100 (ppm)	50-150	Ethoprophos	103	0.100 (ppm)	50-150
Etofenprox	92.7	0.200 (ppm)	50-150	Etoxazole	103	0.100 (ppm)	50-150
Fenoxycarb	119	0.100 (ppm)	50-150	Fenpyroximate	90.4	0.200 (ppm)	50-150
Fipronil	106	0.200 (ppm)	50-150	Flonicamid	110	0.500 (ppm)	50-150
Fludioxonil	99.8	0.200 (ppm)	50-150	Hexythiazox	112	0.500 (ppm)	50-150
Imazalil	117	0.100 (ppm)	50-150	Imidacloprid	116	0.200 (ppm)	50-150
Kresoxim-methyl	111	0.200 (ppm)	50-150	Malathion	95.7	0.100 (ppm)	50-150
Metalaxyl	91.3	0.100 (ppm)	50-150	Methiocarb	92.7	0.100 (ppm)	50-150
Methomyl	98.4	0.200 (ppm)	50-150	Myclobutanil	118	0.100 (ppm)	50-150
Naled	148	0.250 (ppm)	50-150	Oxamyl	92.2	0.500 (ppm)	50-150
Paclobutrazol	121	0.200 (ppm)	50-150	Permethrins	100	0.100 (ppm)	50-150
Phosmet	105	0.100 (ppm)	50-150	Piperonyl butoxide	102	1.00 (ppm)	50-150
Prallethrin	112	0.100 (ppm)	50-150	Propiconazole	102	0.200 (ppm)	50-150
Propoxur	87.4	0.100 (ppm)	50-150	Pyridaben	114	0.100 (ppm)	50-150
Pyrethrins	111	0.500 (ppm)	50-150	Spinosad	87.2	0.100 (ppm)	50-150
Spiromesifen	86.2	0.100 (ppm)	50-150	Spirotetramat	92.9	0.100 (ppm)	50-150
Spiroxamine	99.4	0.200 (ppm)	50-150	Tebuconazole	113	0.200 (ppm)	50-150
Thiacloprid	95.6	0.100 (ppm)	50-150	Thiamethoxam	115	0.100 (ppm)	50-150
Trifloxystrobin	109	0.100 (ppm)	50-150				



Stephanie Moon  
 Laboratory Director - 6/16/2020